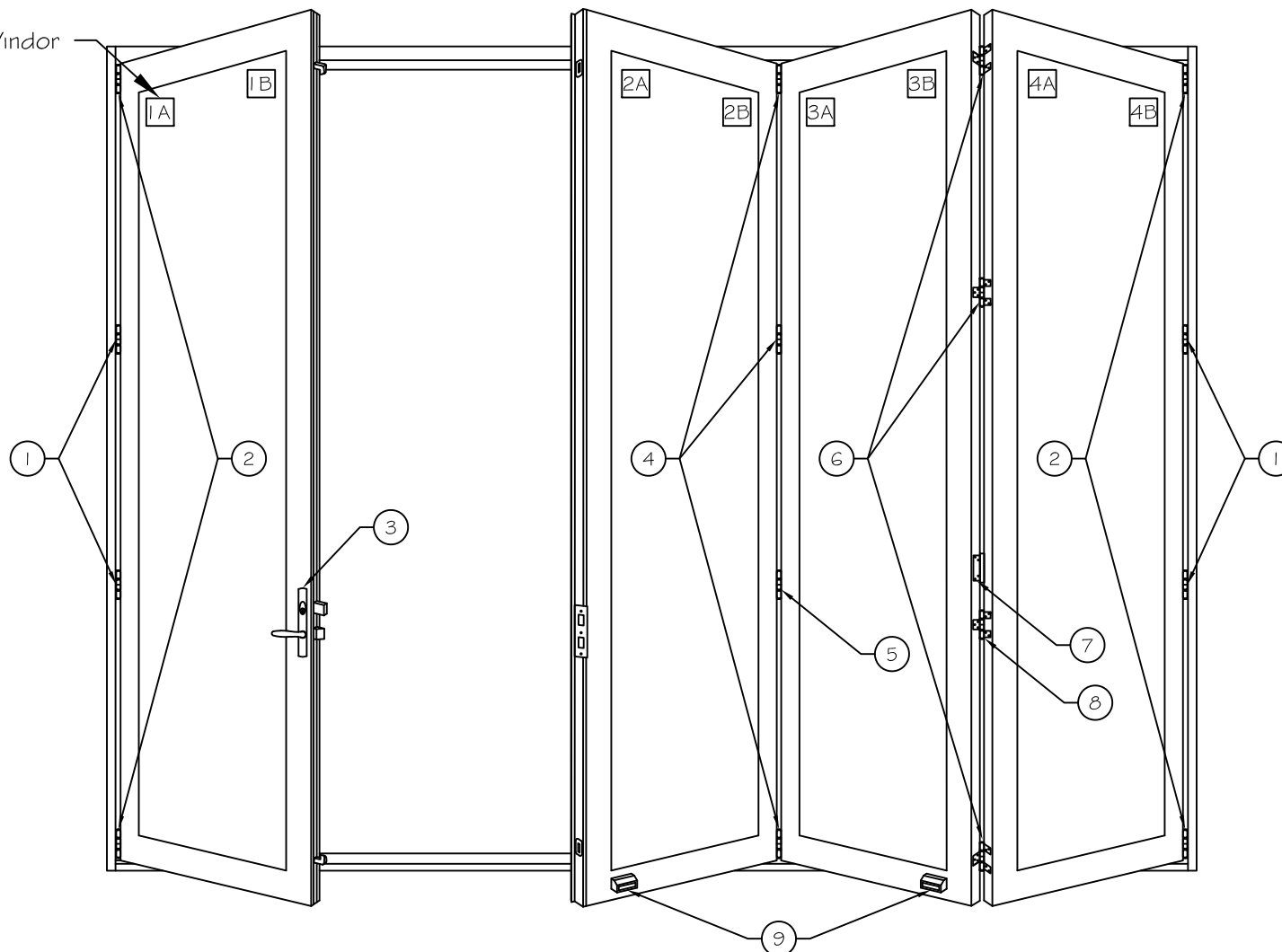


*Panels labeled at Windor



*Door as viewed from the exterior

Folding Door Parts

	Qty.	Description
1	4	E3 WPS Middle Wall Pivot (used with doors over 90" Height)
2	2	E3 CPC Pivot Set
3	1	Hardware Set
4	1	E3 CICS Intermediate Carrier Set
5	1	E3 HHNS Flat Hinge no Handle
6	1	E3 HHNHSS Half Offset Hinge Set No Handle

	Qty.	Description
7	1	E3 HOL Handle Only
8	1	E3 HHNHS Offset Hinge No Handle
9	1	Centor Magnets

Project:

File name: 3750 Folding Door Parts - Doors 8'-10' Height

Date: 20200716

Notes:

Layout: 4.1 P.3

Drawn By: J Johnson